

# Emerald Hills Review

*Emerald Hills Homeowners Association Newsletter*  
Layout and Design by Adriana Botto

April 2, 2010



*Emerald Hills*

## Historic Opportunity for the Emerald Hills Community

Michael Mangini, EHHA President

When was the last time you remember candidates running for the 3<sup>rd</sup> Supervisorial District—the one that represents Emerald Hills in County Government—coming out to meet you in person and ask for your vote?

Never?

Well, that's all about to change.

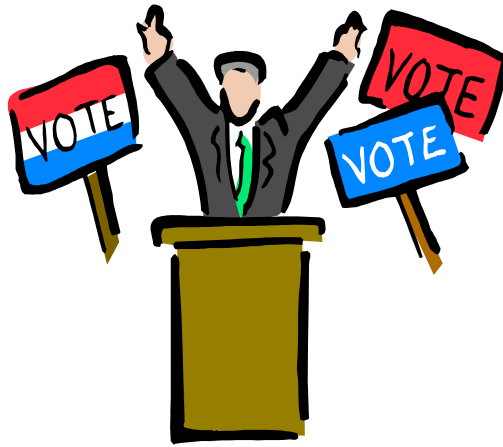
On Sunday night, April 25, 2010, the EHHA will sponsor a first ever *Meet the Candidates Night* at the Peninsula Covenant Church Fellowship Center at 7:30 pm. All five candidates running for the position of your District 3 Supervisor—the only directly elected representative you have in local government—have been invited to come out to share their positions on local issues, answer questions from Emerald Hills residents on community-specific concerns, and meet their potential constituents.

Why has this never happened before? And why is it happening now?

Two reasons:

- 1). With Supervisor Richard Gordon termed out and no appointed candidate running as an incumbent, District 3 will have an open, competed election for the first time in 12 years.
- 2). When more than 1,600 Emerald Hills residents attended a County meeting on land use issues in 2006,

government officials began to recognize that voters in Emerald Hills were becoming increasingly knowledgeable about and engaged in governmental issues that affect our community and are able to mobilize that interest into political action.



Although the EHHA *Meet the Candidates Night* will be open to the public, only members of the Emerald Hills community who can verify residency will be eligible to submit area-specific questions for the candidates – a once-in-a-decade opportunity for our voice and our issues to take center stage.

So plan to join us for this unprecedented opportunity and let our future Supervisor hear about the issues that matter to us in Emerald Hills. Show your family, friends, and neighbors that our community works best when an informed electorate takes the time and makes the effort to personally participate in the democratic process.

I look forward to seeing you there.

### MEET THE CANDIDATES NIGHT 3<sup>rd</sup> Supervisorial District

Peninsula Covenant  
Church Fellowship Center  
3560 Farm Hill Blvd,  
Redwood City

Sunday, April 25, 2010  
7:30 pm



## Four Board Members Elected at EHHA 2010 Annual Member Meeting

Michael Mangini, EHHA President

Incumbents Mike Sherman, Tom Brouchoud, and Marline Underwood were all elected to new two-years terms on the EHHA Board of Directors at the Annual Member Meeting held at the Peninsula Covenant Community Center on March 23, 2010. Also joining the Board this year will be Vicky Costantini, who was nominated from the floor and received enough write-in votes to claim the fourth open position. A fifth community member, Chris Hurchanik, also nominated from the floor but not elected, promised to remain involved with the Association and help with community activities such as the upcoming Third Annual Emerald Hills Community Picnic.

Retiring from the Board this year after two years of dedicated service was Joe Foraker, who was presented with a certificate of appreciation for his good cheer and hard work in bringing the Emerald Hills community back together.

Before the election, the 43 residents attending the meeting were given an overview of what the current Board had accomplished during the 2009-2010 year, including:

- Regular publication of the *Emerald Hills Review*, an 8-page, full color newsletter that has effectively become the Emerald Hills community magazine;
- Successful staging of the Second Annual Emerald Hills Community Picnic;
- Improved relations with San Mateo County government;
- Sponsorship of the upcoming *Meet the Candidates Night* scheduled for April 25, 2010 for residents to meet the candidates running for Supervisor of our District 3 and hear their positions on issues of local concern; and
- Re-establishment of a sound fiscal basis for the Association through increased community support in the form of donations and advertisements placed in the *Emerald Hills Review*.

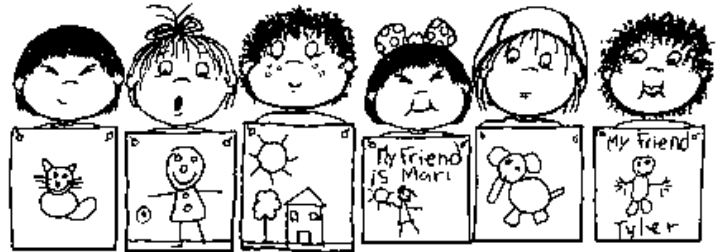
While votes were being tallied, attendees heard a presentation from the Redwood City School District on how the state budget crisis may affect our local schools, and how residents can support the schools by signing a petition to place an initiative on the November ballot to lower the requirement for passing local parcel taxes from 67% to 55%. At present, Redwood City is the only district feeding into the Sequoia Union High School District that is not supported by a parcel tax.

After the election results were announced, everyone was invited to stay involved with Association, by joining the new Board at their monthly meetings or by volunteering their own time to the Association, as the Board continues to serve the community we all love.

## St. Matthias Preschool Young Children Ages 3 – 5

"A Preschool Where Young Children  
Come To Enjoy and Love Learning"

Full/Part Time Program



533 Canyon Road  
Redwood City, CA 94062

Phone 650-367-1320

Fax 650-366-1049

Email: [director@stmatthiasparish.org](mailto:director@stmatthiasparish.org)

[www.stmatthiasparish.org/preschool](http://www.stmatthiasparish.org/preschool)

**ALAIN PINEL**  
REALTORS

**Emerald Hills Real Estate Expert**

*"Live Here, Love it Here"*

*There is nothing quite like a sunny day in  
Emerald Hills. Walk beneath the oaks, go down for a  
swim at the lake or eat and shop at our quaint stores.  
Enjoy long nature hikes at beautiful Edgewood Park  
and become part of our community, because if you  
lived here you would know why it is such a friendly  
place to call home.*

**Vicky Costantini**  
650.430.8425  
[vcostantini@apr.com](mailto:vcostantini@apr.com)  
[vickycostantini.com](http://vickycostantini.com)

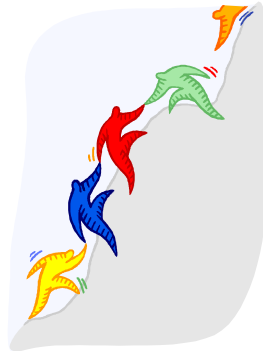
**WOODSIDE | 2930 Woodside Road 650.529.1111**

## San Mateo County "News and Notes"

By Marshall Wilson,  
Public Communications Manager

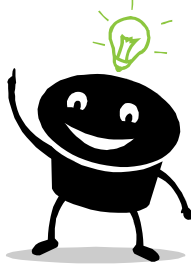
### SMC Budget: Rising to the Challenge

San Mateo County is facing ongoing budget deficits and is looking for your ideas to help our community. San Mateo County has created a web site where employees and members of the public can contribute ideas, discuss ideas, and vote on ideas. Just visit the county's web site at [www.co.sanmateo.ca.us](http://www.co.sanmateo.ca.us) or go straight to <http://smcbudget.ideascale.com> to get started.



What kind of ideas is the county looking for? Ideas must contribute to the efficiency, economy, or improvement of county operations or services. Eligible ideas include ways to:

- Reduce costs, duplication, time, waste or accidents;
- Generate new revenue or increase existing revenue;
- Improve procedures, service, working conditions, safety, or workflow;
- Increase productivity;
- Save time, materials, labor, energy, or money.



We look forward to hearing from you.

### Edgewood Park Update

San Mateo County and the San Mateo County Parks Foundation recently held a groundbreaking ceremony for what will become the Bill and Jean Lane Education Center at Edgewood County Park and Natural Preserve.



Bird's-Eye View of the Exterior the Bill and Jean Lane Education Center at Edgewood County Park and Natural Preserve

The \$1.3 million center provides the opportunity to increase the visibility of volunteer programs, recruit volunteers and expand environmental education efforts. Bill Lane is the former publisher of Sunset Magazine and Jean Lane has served on the boards of local and national environmental organizations.

"Last year the Board of Supervisors chose to recognize the many contributions to our community by naming the center in honor of Jean and Ambassador L. W. "Bill" Lane, Jr.," said Board President Richard S. Gordon. "The Lanes were instrumental in bringing about many of the treasures in our community that we enjoy today. They provided a significant gift toward building the center and this gift among their many others will inspire our future generations to take care of our natural treasures."

The planned building is modest, with a small ranger and docent office, storage and accessible bathrooms. It is scheduled to open within a year.



### Charter Review Committee

The San Mateo County Charter Review Committee will meet at various locations across the county over the next three months. The committee is reviewing the Charter and, after public hearings, will make recommendations to the Board of Supervisors for amendments to be submitted to county voters.

For meeting dates, times, and locations, please visit [www.co.sanmateo.ca.us/charterreviewcommittee](http://www.co.sanmateo.ca.us/charterreviewcommittee) or call (650) 363-4153.

The general purpose of a county charter is to provide a measure of home rule to the counties of the state. The charter defines San Mateo County's structure, powers and functions. It's akin to a local constitution.



In its review of the Charter, the Committee will specifically address the Civil Grand Jury recommendations regarding Board member elections and filling Board vacancies, and the method of electing members of the Board of Supervisors from the current "at large" system to a "by district" system. In addition to other items, the Committee will consider consolidation and reorganization of departments, and other organization improvements requiring a Charter amendment.

Videos of past Charter Review Committee meetings are also posted on the web site. (*"News and Notes" continued on next page*)

## Volunteer Opportunities

If you like to volunteer and get some exercise, you are invited to help out with trail repairs, habitat restoration, and other services at San Mateo County parks.



Qualified volunteers should:

- Enjoy working outdoors;
- Enjoy individual and group activities;
- Have a willingness to complete related training; and
- Be interested in serving as stewards of County Parks.

For more information, please contact Carla Schoof, volunteer programs coordinator, at (650) 599-1306 or via e-mail at [cschoof@co.sanmateo.ca.us](mailto:cschoof@co.sanmateo.ca.us).



## SMC Works

Using the American Recovery and Reinvestment Act funding, the Human Services Agency assists local families, individuals and businesses during these challenging economic times.

SMC Works strengthens the local economy by providing referrals of qualified workers and subsidizing employment costs for businesses. SMC Works also helps unemployed parents re-enter or gain entry to the workforce.

SMC Works provides employment opportunities for eligible parents and wage subsidies for employers.

For more information, contact SMC Works at (650) 877-5627 or [smcworks@smchsa.org](mailto:smcworks@smchsa.org).

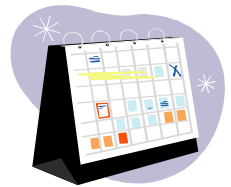
## Do You Have a Question about San Mateo County Government?

Please contact Deputy County Manager **Peggy Jensen** at [pjensen@co.sanmateo.ca.us](mailto:pjensen@co.sanmateo.ca.us) or (650) 363-4598 or Public Communications Manager **Marshall Wilson** at [mwilson@co.sanmateo.ca.us](mailto:mwilson@co.sanmateo.ca.us) or (650) 363-4153.

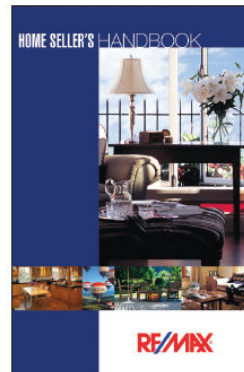


## When Does the EHHA Board Meet?

The EHHA Board typically holds its monthly meetings on the second Wednesday of each month in the conference room (lower level) of the new Woodside Fire Station 19 at Jefferson Avenue and Wilmington Way. Meetings are open to the community, and we invite you to attend. The meeting schedule is available on our web site [www.emeraldhills.org](http://www.emeraldhills.org).

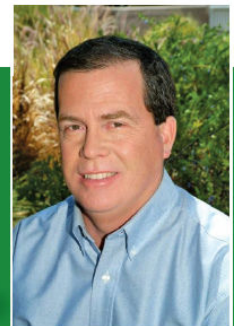


Perhaps my favorite image of the Emerald Hills is from times spent on back decks during winter rains. But, maybe it's a summertime swim at Lower Emerald Lake, a hike around Edgewood Park, or a Bleu Swiss Burger at the Canyon Inn. Whatever it is, it's these unique feelings that make the Emerald Hills a very special place to live.



While supplies last, receive our latest "Homesellers Handbook" absolutely free. Just email or call me with your mailing address and we'll mail this informative guide right away.

And remember, if you have friends, family or acquaintances thinking of buying or selling a home, I'm never too busy for any of your referrals.



**John Sieling**  
Broker Associate  
Phone: 650-610-6460  
Cell: 650-465-6355  
[john@johnsieling.com](mailto:john@johnsieling.com)  
[www.TheEmeraldHills.com](http://www.TheEmeraldHills.com)  
CA DRE #00898568

## Project Update: Peninsula Bay Division Pipeline Construction to Break Ground in April 2010

By Alison Anja Kastama



Mountain Cascade Inc. (MCI), the San Francisco Public Utilities Commission's (SFPUC) contractor for the 9-mile Peninsula Portion of Bay Division Pipeline No. 5 project, plans to begin construction in April of this year. MCI proposes to start construction within the

SFPUC's Right of Way near Avenue Del Ora and South Place, with construction moving west towards Bennett Road and Cordilleras Road. Construction to the west of Cordilleras Road is slated for later this year.

Once this pipeline segment is constructed, the MCI team will transfer their crews to other areas of the pipeline alignment. This non-linear construction schedule is required because of restricted access at the various parks, schools, streets and drainage crossings the pipeline must pass through.

The project team is working closely with the City of Redwood City staff to ensure minimal traffic and public facility impacts when construction advances. The public will receive ample notification before construction reaches their area.

Construction on or near school and park sites such as John Gill Elementary, Red Morton Park, and Hawes Elementary School, is restricted to the summer months when children are not present. We anticipate work to begin at these sites in June 2010.

Please check our project blog at [www.sfwater.org/PenPL](http://www.sfwater.org/PenPL) for weekly updates on construction progress. If you have any questions, or would like additional information about the project, please contact the SFPUC at (800) 571-6610 or [baydivision@sfwater.org](mailto:baydivision@sfwater.org). We look forward to working with you during construction!

## Practical Ways to Live Green and Save Money

By John Raleigh

No matter what your beliefs about global warming, there are major governmental plans to increase the cost of energy use, control fossil fuel use, and promote alternative energy. In fact, in the Bay Area, we already pay extra fees or fines, for over use.



Some thoughts and statistics for consideration:

- Water rates are 5 times higher for large users compared to basic. In fact, a house with an irrigated half acre lot will cost 10 times more for water (in the summer) than for a house in Sacramento (they have no meters) and a thousand times more than an agricultural user for the same size area.

- PG&E rates for electricity are \$0.36/KWH for the higher tier user and only \$0.11/KWH for the basic user. Indiana electricity users pay \$0.06/KWH (one sixth of what a homeowner in a 3,000 square foot home would pay in the Bay Area and half of what a basic users pays/KWH).
- We also pay about 10% more for gasoline and diesel and about 50% more for natural gas than the lower cost areas, like Texas.
- Nationally, a carbon tax or a cap and trade tax is proposed in Congress. In the Bay Area, we already pay a "tax" because our rates are more than double the national rates. If the carbon tax is fair, the coal burning states like Indiana would pay more and we would pay less. More than likely, Congress will come up with a plan that makes us all pay more.

There are voluntary plans of action that will save energy, decrease use of foreign oil, and save you money.

I'm providing two lists of things you can do to reduce your carbon footprint, live greener, and make you feel good about helping save the planet, or just ways to save money. One list provides inexpensive things you can do, and the other some more expensive ideas.

Here are inexpensive ways, some specific to the Bay Area, to save energy, water and money:

- Use CFL light bulbs, motion sensors, and unplug energy vampires like TV's, computers and chargers;
- Buy local, sustainable, green products, shop with your own cloth bag, and only buy what you need;
- Recycle, buy recycled or used products, support Community Supported Agriculture (CSA) and/or support your local farmers markets;
- Buy a programmable thermostat, set it at 68 degrees in winter/78 in summer and turn the heat/AC off when you are sleeping;
- Cut down on unnecessary car trips, when you get to your destination, park in the first spot you find (don't needlessly drive to find a closer parking space);
- Use public transportation or use a rental car service like Zipcar and you can eliminate one or all the cars you own (even an inexpensive car can cost \$5,000/year to own and maintain);
- Walk or bike to school or work;
- Live near your job, live in a concentrated dense urban area (most Europeans live in cities and use half the energy we do);
- Use less water, drink tap water not bottled, plant local drought resistant plants instead of lawns, or let



your lawn dry out in the summer (pumping water uses massive amounts of energy);

- Vacation locally or take one long vacation instead of several short ones and save a lot of driving;
- Use low VOC paints, paint your roof with reflective roof paint that repels heat;
- Chalk and seal your house;
- Buy or rent a smaller house;
- Use regular instead of premium gas (try it, if the engine doesn't ping it'll run fine), don't warm up your engine (modern cars don't need a warm up);
- Change your oil every 15,000 miles (according to manufacturer instruction) not every 3,000 miles;
- Set your pool pump to run at night (7 hours a night in the summer and 1 hour in the winter), buy a pool cover;
- If you have a new PG&E smart meter, do your laundry at night, and use only cold water, lower your hot water heater temperature to 110 degrees;
- If you are a dedicated "Greeny", dry your laundry on a clothesline and plant your own vegetables, herbs, and fruit trees;
- Compost, buy organic food (conventional fertilizer and pesticides use a lot of energy), put in a beehive;
- Eat less meat (beef takes 2,500 gal of water/pound to produce, animals produce methane and use more water and energy than plants to produce the same amount of calories);
- Use gray water for yard irrigation, take 2 minute showers, share bath water, turn your pool into a water retention cistern;
- Review and use the ideas found in the U.S. Department of Energy's "Energy Savers Booklet – Tips on Saving Energy & Money at Home" (click on [http://www1.eere.energy.gov/consumer/tips/pdfs/energy\\_savers.pdf](http://www1.eere.energy.gov/consumer/tips/pdfs/energy_savers.pdf));
- Measure your carbon footprint (visit either <http://www.carbonfootprint.com/calculator.aspx> or <http://www.nature.org/initiatives/climatechange/calculator/>);
- Visit San Mateo County's RecycleWorks website for information on green building or remodeling at <http://www.recycleworks.org/greenbuilding/index.html>;
- Visit the Database for State Incentives for Renewables and Efficiency (DSIRE) for information on state, local, utility and federal incentives and policies that promote renewable energy and energy efficiency. (click on <http://www.dsireusa.org/>).



Here are some other (albeit more expensive) ways to save energy (and an estimated pay off time):

- Buy a hybrid or electric car (pay off time 10 years);
- Buy or build a passive solar house, or install photovoltaic active solar panels (pay off time 8-10 years);
- Replace your windows with dual pane or better (pay off time 10-25 years);
- Insulate more or put in a thermo barrier in your attic (pay off time 3-5 years);
- Install an attic fan for cooling and use reversible ceiling fans to help heat and cool (pay off time 1-3 years);
- Remodel with "Green" certified products (pay off time 10-20 years);
- Use solar and/or on demand hot water (pay off time 5-10 years);
- Use a solar pool heater (pay off time 3-5 years);
- Buy "Green" appliances, plumbing fixtures and HVAC (pay off time 3-8 years);
- Replace your lawn with an artificial lawn (pay off time 5-10 years);
- Invest in new clean technology companies or buy carbon credits.



If you just try some of the inexpensive suggestions, you can save 20% of your energy and water usage. If you try **all** of these suggestions, a 75% reduction in your energy and water usage is possible.

## Kitchens by Design



At Springs Construction, we have a three-point plan to design a kitchen just for you based on *form, function, and value.*

Call us today at (650) 298-9300 to talk about a design for your kitchen. Let us know you are an Emerald Hills neighbor and get a free kitchen design profile.



WALTER M. SPRINGS  
CONSTRUCTION  
881 Hurlingame Ave.  
RWC 94063  
[www.springsconstruction.com](http://www.springsconstruction.com)  
Lic # 232003

**Thanks for Your Continued Support**  
A Message From EHHA Treasurer, Tim Farrar



At the end of 2009, the Association had almost \$4,100 in the bank and has nearly doubled its revenues from 2008. While donations grew slightly from \$5,264 in 2008 to \$5,305 in 2009 (with contributions received from 99 residents), most of the increase in revenues resulted from our decision to seek advertising to support the costs of the printed newsletter. We received \$3,750 in adverts in 2009, sufficient to cover most of the printing and postage costs incurred for the four newsletters published during the course of the year. Due to lower levels of sponsorship for the picnic compared to 2008, we also decided to make a modest charge for food and to hold a raffle, and this brought in an additional \$944 in total. Expenses for the year totaled \$9,697, with the vast majority of expenses related to the newsletter (\$6,397) and the community picnic (\$2,540).

Although adverts didn't completely cover the costs of the first few newsletters, we made good progress in building our reputation as a cost-effective option for local advertisers, and our move to full color printing from a new vendor (which actually lowered our costs compared to the previous printing solution) was also of considerable benefit to potential advertisers. In 2010 we therefore expect to come much closer to covering all of the newsletter costs, despite additional costs imposed by the USPS due to new bulk mailing regulations.

Advertising in *The Review* is a very cost-effective way of reaching the community because we know from residents' feedback that it is widely read, retained, and not put immediately into the recycling bin like some other publications.

Enclosed with this newsletter you will find a donation envelope, which you may use to send contributions, with checks payable to the EHHA. If you receive the newsletter electronically, then you may send donations to us by mail at EHHA, Attn: Treasurer, PO Box 620449, Woodside, CA 94062, or you may donate via PayPal at <http://emeraldhills.synthasite.com/donate.php>. And for supporters who donate \$100 or more to the Association, the EHHA will give you a high-quality polo shirt or cap embroidered with the Emerald Hills logo. (If you would like a polo shirt or a cap, please include a note with your donation indicating your choice of thank-you gift and preferred shirt size, if applicable, with each donation of \$100 or more.)

We hope that you enjoy reading the newsletter. Please do let advertisers know if you see their ad in our newsletter, so that they know its money well spent. Thank you!



**EHHA Profit & Loss**  
January through December 2009

	<u>Jan - Dec 09</u>
<b>Income</b>	
Donations Received	5,305.00
Advert	3,750.00
Picnic Receipts	944.00
Polo shirts/caps	40.00
<b>Total Income</b>	<u><u>10,039.00</u></u>
<b>Expense</b>	
Bulk mail permit	180.00
Newsletter Postage	1,303.36
Newsletter Printing	4,913.85
<b>Total Communications</b>	<u>6,397.21</u>
Community picnic	2,540.46
Member Meetings	90.00
Polo shirts/caps	355.45
<b>Total Events and Projects</b>	<u>2,985.91</u>
Bank Charges	56.79
Supplies/Postage	105.27
PO Rent/bus license	152.00
<b>Total Operations</b>	<u>314.06</u>
<b>Total Expense</b>	<u><u>9,697.18</u></u>
<b>Net Income</b>	<u><u>341.82</u></u>

**EHHA Balance Sheet**  
As of December 31, 2009

	<u>Dec 31, 09</u>
<b>ASSETS</b>	
<b>Current Assets</b>	
Checking/Savings	
Checking	3,456.86
<b>Total Checking/Savings</b>	<u>3,456.86</u>
<b>Other Current Assets</b>	
Accounts receivable	500.00
Polo shirt/cap inventory	140.00
<b>Total Other Current Assets</b>	<u>528.03</u>
<b>TOTAL ASSETS</b>	<u><u>4,096.86</u></u>
<b>LIABILITIES &amp; EQUITY</b>	
<b>Equity</b>	
Opening Bal Equity	7,955.38
Retained Earnings	-4,200.34
Net Income	341.82
<b>Total Equity</b>	<u>4,096.86</u>
<b>TOTAL LIABILITIES &amp; EQUITY</b>	<u><u>4,096.86</u></u>

**Yes! I want to contribute...**

- I would like to contribute \$35.
  - I can spare a bit more. Here is my donation for \$50.
  - Here is my contribution for \$100.  
 I would like a cap  *or* a polo shirt .
- My shirt size is  Ladies'  Men's  
 SM  MED  L  XL
- I am a resident of one of the most desirable neighborhoods on the Peninsula, and I want to keep it that way! Here is my contribution of \$ \_\_\_\_\_.

- My check is enclosed.

If you would like to donate via credit card, please visit  
<http://emeraldhills.synthasite.com/donate.php>  
*Your personal information is kept confidential.*

\_\_\_\_\_  
 Name

\_\_\_\_\_  
 Street Address

**Emerald Hills, CA 94062**

\_\_\_\_\_  
 City, State Zip

\_\_\_\_\_  
 Phone # (optional)

\_\_\_\_\_  
 E-mail Address (optional, but requested)

- Please send the email newsletter instead of print, to help preserve the environment *and* save the Association money.
- Please send me both the print and email newsletter.

You can make donations online at  
<http://emeraldhills.synthasite.com/donate.php>  
 or you can mail your contributions to:

**EHHA, PO Box 620449, Woodside, CA 94062**

*Please note that donations to the EHHA are not tax deductible.*

**Contact the Board of Directors**

Tom Brouchoud <sup>1</sup> (Vice President) .....	366-7890
Vicky Costantini <sup>1</sup> .....	430-8425
Tim Farrar <sup>2</sup> (Treasurer) .....	642-5195
Michael Mangini <sup>2</sup> (President) .....	365-4449
John Raleigh <sup>2</sup> .....	743-4111
Jay Roses <sup>2</sup> (Corr. Secretary) .....	766-7425
Mike Sherman <sup>1</sup> (Webmaster/Database Mgr.) .....	544-0896
Carl Touhey <sup>2</sup> (Community Picnic) .....	368-2216
Marline Underwood <sup>1</sup> .....	224-1214

<sup>1</sup> Term expires at the 2012 Annual Meeting of Members

<sup>2</sup> Term expires at the 2011 Annual Meeting of Members

**Builder and Neighbor Since 1959**



It all started fifty years ago with a commitment to solid craftsmanship and a drive to perform the job better than anyone else.

So, if you are planning a new home, a simple or complex remodel, green building, a kitchen or a bath, Springs Construction is ready to help you expedite your building process. Whether you simply have an idea, or have plans ready for building, call us at (650) 298-9300. We are here to help.

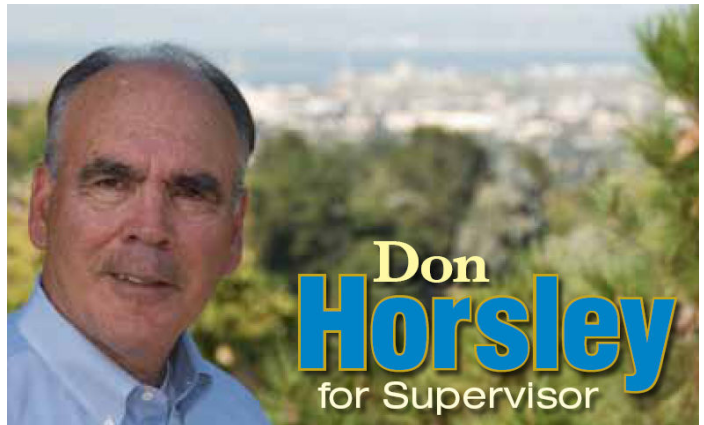


**WALTER M. SPRINGS  
 CONSTRUCTION**

881 Hurlingame Ave. RWC 94063

[www.springsconstruction.com](http://www.springsconstruction.com)

Lic # 232003



- Experienced leadership - former San Mateo County Sheriff and current President of Healthcare District Board.
- Strong advocate for plans to reinvigorate our local economy by fostering the growing Green Tech and Bio Tech industries.
- A former teacher and supporter of assisting local schools, our parks and public safety as top local priorities.

**Don Horsley**  
*Experienced and Skilled At Making Tough Decisions*



As a former high school teacher, Don knows the importance of quality instruction to our children's future. He'll use his experience to ensure our schools are getting the resources they need.



Under his leadership as Sheriff from 1993 to 2007, San Mateo County had the lowest crime rate in the entire state.

[www.donhorsley.net](http://www.donhorsley.net)



As President of the Sequoia Healthcare District, Don has worked for creative solutions to provide quality care in our local communities, including an incentive program to address the shortage of nurses in our region.